








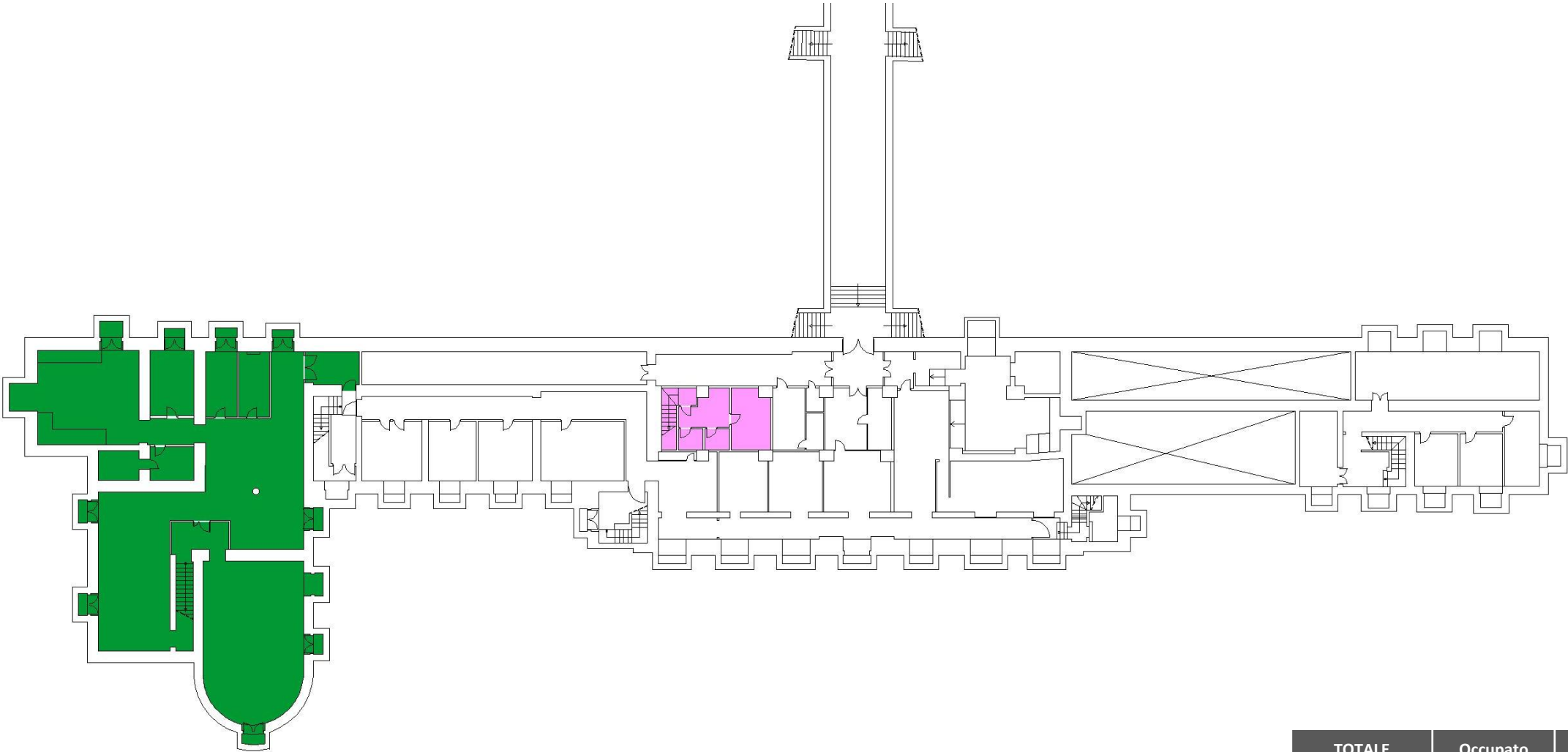




							TOTALE		Occupato		Libero					
							Biglietterie Self Service		Tot. N°	10	N°	8		N°	2	
							Desk mobili		Tot. N°	0	N°	0		N°	0	
Rail - Biglietteria	Sup. Tot. m²	80	m²	80		m²	0									
Rail - Assistenza/Accoglienza	Sup. Tot. m²	0	m²	0		m²	0									
Retail	Sup. Tot. m²	469	m²	469		m²	0									
									Aree funzionali di pari ed adeguata visibilità ed accessibilità per i viaggiatori							
									Sale d'attesa tradizionali/Sedute a libero accesso							



								TOTALE		Occupato		Libero			
		TOTALE		Occupato		Libero		Biglietterie Self Service		Tot. N°	0	N°	0	N°	0
Rail - Biglietteria		Sup. Tot. m²	32	m²	32		m²	0		Tot. N°		0	N°	0	
Rail - Assistenza/Accoglienza		Sup. Tot. m²	0	m²	0		m²	0		Tot. N°		0	N°	0	
Retail		Sup. Tot. m²	381	m²	381		m²	0		Tot. N°		0	N°	0	
								Aree funzionali di pari ed adeguata visibilità ed accessibilità per i viaggiatori							
								Sale d'attesa tradizionali/Sedute a libero accesso							

Reggio Emilia

Scadenza contratti di locazione

	BSS e validatrici	Desk	Biglietterie Tradizionali	Locali di Assistenza/ Accoglienza
IF 1	10/12/2033	-	10/12/2033	-

Numero treni passeggeri

	N. treni/g in Partenza	N. treni/g in Arrivo	N. treni/g in Transito
Reggio Emilia	0	0	112